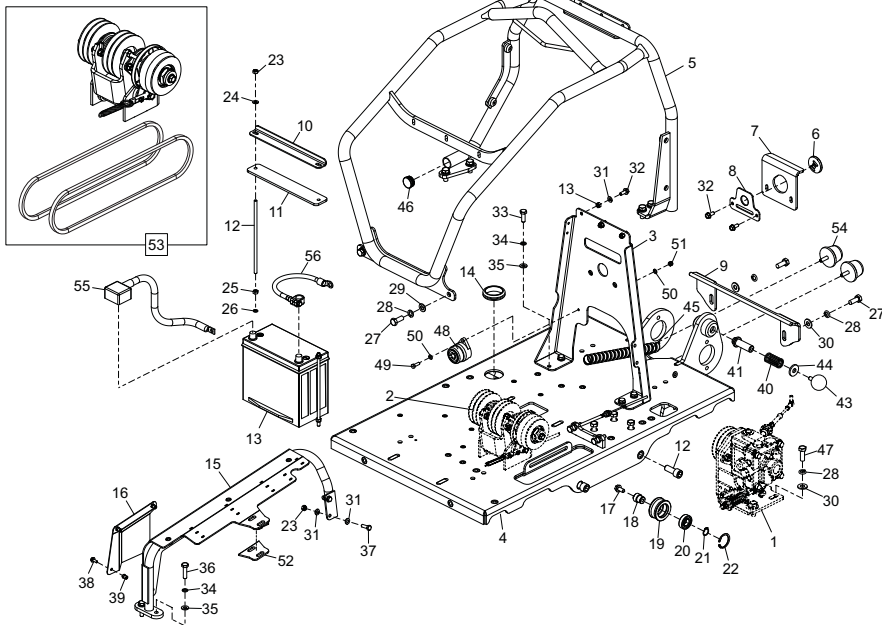


Chassis & Vibrator Assembly

1 - ##	981/06000.....	Chassis	Chassis	Chassis	Chassis	1
2	981/99984.....	Shaft.....	Axe.....	Eje.....	Veio	1
3	981/99979.....	Cover.....	Couvercle.....	Cubierta	Tampa	1
4	981/99985.....	Spacer.....	Entretoise.....	Espaçador	Espaçador	1
5	7/8037.....	Screw.....	Vis.....	Tornillo	Parafuse	M8 x 20
6	8/8007.....	Nut.....	Ecrou	Tuerca	Porca.....	M8
7	7/16006.....	Screw.....	Vis.....	Tornillo	Parafuse	M16.....
8	53/0089.....	Bearing.....	Roulement	Cojinete	Rolamento	2
9	981/99906.....	Pulley.....	Poulie.....	Polia	Polia	1
10	981/99907.....	Washer.....	Rondelle	Arandela	Anilha	1
11	8/12006.....	Nut.....	Ecrou	Tuerca	Porca.....	M12
12	4/1204.....	Washer.....	Rondelle	Arandela	Anilha	M12.....
13	9/12019.....	Bolt.....	Boulon.....	Perno	Perno	M12 x 55
14	02.5.019.....	Screw.....	Vis.....	Tornillo	Parafuse	4
15	4/1005.....	Washer.....	Rondelle	Arandela	Anilha	M10.....
16	4/1003.....	Washer.....	Rondelle	Arandela	Anilha	M10.....
17	7/10010.....	Screw.....	Vis.....	Tornillo	Parafuse	M10 x 30
18	21/0335.....	Anti-Vibration Mount	Tampon antivibratoire	Montura antivibratoria	Bloco Anti-vibração	4
19	981/99957.....	Scraper.....	Racleur	Arrastre	Raspadeira	2
20	7/12013.....	Screw.....	Vis.....	Tornillo	Parafuse	M12 x 35
21	4/1202.....	Washer.....	Rondelle	Arandela	Anilha	M12
22	981/06400.....	Pipe.....	Tube.....	Pistão	Zuiger	4
23	3/3015.....	Grommet.....	Passes-til	Ojal.....	Anel Isolante	Ø25mm
24	981/04600.....	Scraper.....	Racleur	Arrastre	Raspadeira	2

- To see the colour options for this part, please see the '#' area of the 'Spare Parts Information' section of the Operators Manual.

- To see the colour options for this part, please see the '##' area of the 'Spare Parts Information' section of the Operators Manual.



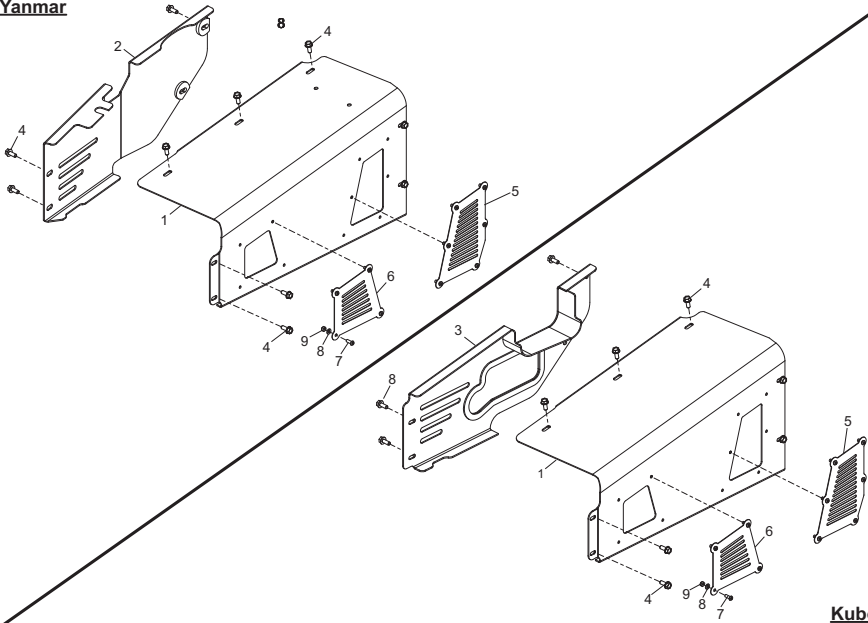
Bedplate Assembly

1	⊗ 9-01	Hydraulic Pump	Pompe hydraul.	Bomba hidráulica	Bomba hidráulica	1
2	⊗ 8-01	Layshaft Assembly	Assemblée arbre intermédiaire	Bombaleja eje intermedio	Montagem do Eixo Intermediário	1
3	## 981/02900	Bracket	Patte de montage	Escuadra	Soporte	1
4	## 981/06100	Bedplate	Plaque d'Assise	Bancada	Placa de Apoio	1
5	## 981/06200	Frame	Châssis	Estrutura	Estrutura	1
6	981/03700	Plate	Plaque	Placa	Placa	1
7	981/99923	Hook	Crochet	Gancho	Gancho	1
8	981/99939	Plate	Plaque	Placa	Placa	1
9	## 981/04800	Clamp	Bride	Mordaza	Grampo	1
10	981/99980	Bracket	Patte de montage	Escuadra	Soporte	1
11	981/99987	Plate	Plaque	Placa	Placa	1
12	981/99986	Cover	Couvercle	Cubierta	Parafuso	1
13	70/0270	Battery	Batterie	Bateria	Bateria	1
14	3/3014	Grommet	Passe/Ńil	Ojal	Anel Isolante	Ø55mm
15	## 981/07200	Railing	Garde-Pou	Barandilla	Grade	1
16	## 981/99983	Cover	Couvercle	Cubierta	Yanmar	1
17	7/10039	Screw	Vis	Tornillo	Parafuso	M10 x 20
18	181/99750	Pin	Goupille	Pasador	Pino	1
19	181/99747	Pulley	Poulie	Polia	Polia	1
20	53/0016	Bearing	Roulement	Cojinete	Rolamento	1
21	3/9003	Circlip	Circlip	Resorte circular	Grampo circular	1
22	MS22	Circlip	Circlip	Resorte circular	Grampo circular	1
23	8/8003	Nut	Ecrou	Tuerca	Porca	M8
24	4/8001	Washer	Rondelle	Arandela	Anilha	M8
25	8/8003	Nut	Ecrou	Tuerca	Porca	M8
26	4/8003	Washer	Rondelle	Arandela	Anilha	M8
27	7/10003	Washer	Rondelle	Arandela	Parafuso	M12
28	4/1202	Washer	Rondelle	Arandela	Anilha	M12
29	4/1204	Washer	Rondelle	Arandela	Anilha	M12
30	4/1201	Washer	Rondelle	Arandela	Anilha	M12
31	4/8006	Washer	Rondelle	Arandela	Anilha	M8
32	7/8037	Screw	Vis	Tornillo	Parafuso	M8
33	9/10001	Bolt	Boulon	Perno	Perno	M10
34	4/1003	Washer	Rondelle	Arandela	Anilha	M8
35	4/1005	Washer	Rondelle	Arandela	Anilha	M10
36	9/10030	Bolt	Boulon	Perno	Perno	M10
37	7/8012	Screw	Vis	Tornillo	Parafuso	M8
38	7/6034	Screw	Vis	Tornillo	Parafuso	M6
39	8/6011	Nut	Ecrou	Tuerca	Porca	M6
40	2/0061	Spring	Ressort	Resorte	Mola	1
41	981/99961	Washer	Rondelle	Arandela	Embolito	1
42	7/16014	Screw	Vis	Tornillo	Parafuso	M16
43	74/0028	Knob	Poignée	Pomo	Boião	1
44	2/0071	Washer	Rondelle	Arandela	Anilha	1
45	3/4112	Spring Wrap	Banderolage hélicoïdal	Borje Espiral	Invólucro em Espiral	1
46	3/4047	Bung	Obturbateur	Tampón	Tampão	1
47	7/12013	Screw	Vis	Tornillo	Parafuso	M12
48	70/0267	Washer	Rondelle	Arandela	Sirene	1
49	7/5024	Screw	Vis	Tornillo	Parafuso	M6 x 30
50	4/5002	Washer	Rondelle	Arandela	Anilha	M5
51	8/5003	Washer	Ecrou	Tuerca	Porca	M5
52	981/99905	Wedge	Coussin	Calzo	Calço	1
53	981/07900	Driveline Kit	Kit de Transmission	Kit de Accionamiento	Conjunto de Transmissão	1
54	21/0283	Buffer	Butoir	Parachocs	Amortecedor	2
55	140/0500	Cable - Positive	Cable - Positif	Cable - Positivo	Cabo - Positivo	1
56	71/0270	Cable - Negative	Cable	Cable	Cable	1

* - If ordering item 15 please order 2 x item 52 also.

- To see the colour options for this part, please see the '#' area of the 'Spare Parts Information' section of the Operators Manual.

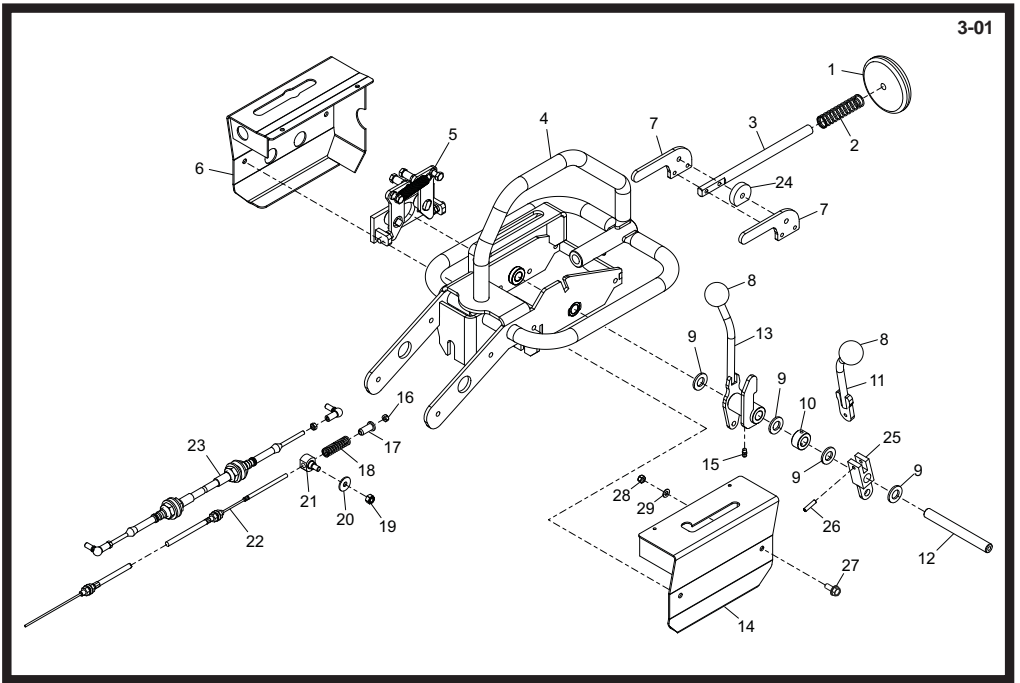
- To see the colour options for this part, please see the '###' area of the 'Spare Parts Information' section of the Operators Manual.



Kubota

Side Guards

1 - #	981/99982 Side GuardCouvercle latéralTapa lateral Tampa lateral Yanmar 1
1 - #	981/99981 Side GuardCouvercle latéralTapa lateral Tampa lateral Kubota 1
2 - #	981/06700 Side GuardCouvercle latéralTapa lateral Tampa lateral Yanmar 1
3 - #	981/07000 Side GuardCouvercle latéralTapa lateral Tampa lateral Kubota 1
4	7/8037 Screw Vis Tornillo Parafuse	 11
5	981/99802 Plate Plaque Placa Placa	 1
6	981/99803 Plate Plaque Placa Placa	 1
7	7/6046 Screw Vis Tornillo Parafuse	 10
8	4/6001 Washer Rondelle Arandela Anilha	 10
9	8/6007 Nut Ecrou Tuerca Porca	 10



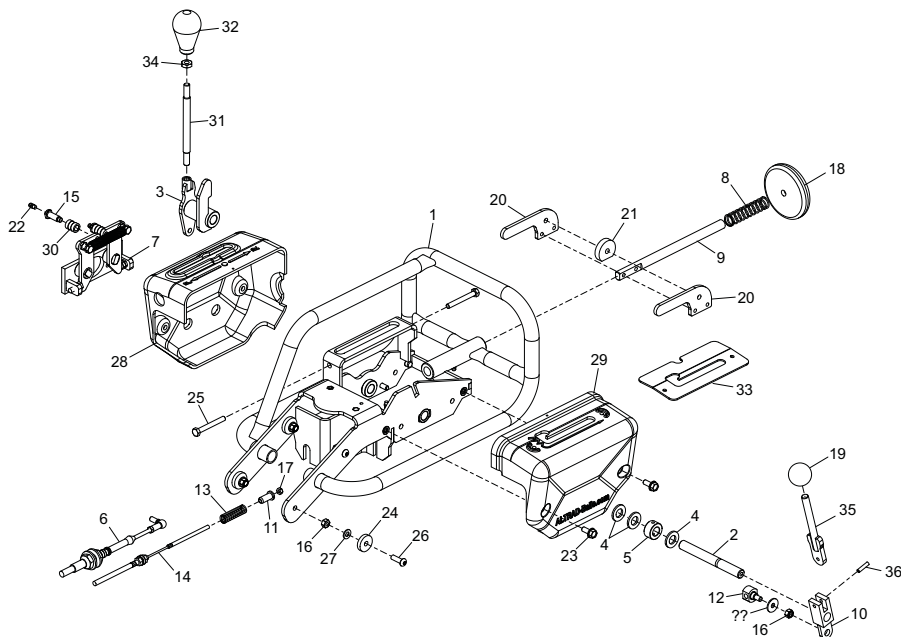
Controls

→ 01181

1	981/99920 Buffer Butoir Parachouques Amortecedor 1
2	919/99826 Spring Ressort Resorte Mola 1
3	981/99912 Bar Barre Barra Barra 1
4 - ##	981/03200 Handle Guidon Manillar Punho 1
5	981/05500 Self-Centre Assembly 1
6 - # Cover Couvercle Cubierta Tampa 1
7	981/99965 Plate Plaque Placa Placa 2
8	74/0026 Knob Poignée Pomo Botão 2
9	981/03212 Washer Rondelle Arandela Anilha 4
10	981/03211 Spacer Entretoise Espaciador Espaçador 1
11	981/03300 Lever Levier Palanca Alavanca 1
12	981/99958 Bar Barre Barra Barra 1
13	981/03400 Lever Levier Palanca Alavanca 1
14 - # Cover Couvercle Cubierta Tampa 1
15	500/06100 Grease Nipple Téton de graissage Conexión para engrase Bocal de Lubrificação 2
16	8/6007 Washer Rondelle Arandela Anilha M6
17	981/99931 Pin Goupille Pasador Pino 1
18	2/0071 Spring Ressort Resorte Mola 1
19	8/8008 Nut Ecrou Tuerca Porca M8
20	4/8004 Washer Rondelle Arandela Anilha M8
21	981/99932 Boss Bossage Resalte Cubo 1
22	981/99915 Vibrator Cable Câble de vibreur Cable del vibrador Cabo Vibratória 1
23	981/99917 Control Cable Câble de commande Cable de control Cabo de Controló 1
24	981/99966 Spacer Entretoise Espaciador Espaçador 1
25	981/03900 Clevis Chape Horquilla Grampo 1
26	3/0039 Pin Goupille Pasador Pino 1

- To see the colour options for this part, please see the '#' area of the 'Spare Parts Information' section of the Operators Manual.

- To see the colour options for this part, please see the '##' area of the 'Spare Parts Information' section of the Operators Manual.



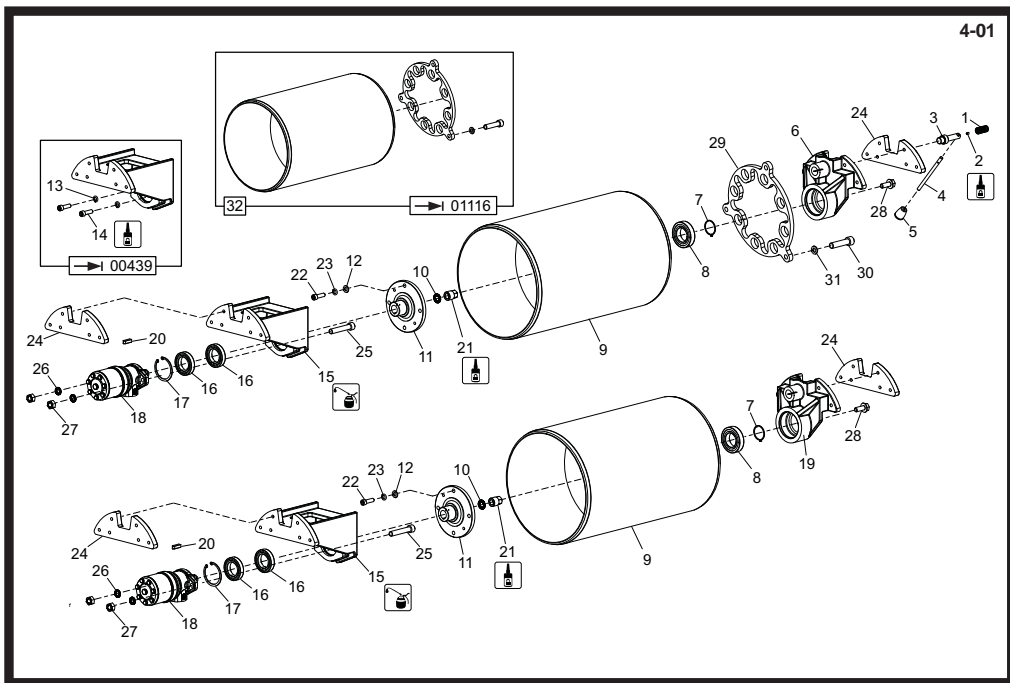
Controls

01182

1	981/09200	Handle	Guidon	Manillar	Punho	1
2	981/99958	Bar	Barre	Barra	Barra	1
3	981/09500	Lever	Levier	Palanca	Alavanca	1
4	981/03212	Washer	Rondelle	Arandela	Anilha	4
5	981/03211	Boss	Bossage	Resalte	Cubo	1
6	981/99821	Control Cable	Câble de commande	Cable de control	Cabo de Control	1
7	981/05500	Self-Centre Assembly				1
8	2/0072	Spring	Ressort	Resorte	Mola	1
9	981/99912	Bar	Barre	Barra	Barra	1
10	981/03900	Clevis	Chape	Horquilla	Grampo	1
11	981/99931	Boss	Bossage	Resalte	Cubo	1
12	981/99932	Boss	Bossage	Resalte	Cubo	1
13	2/0071	Spring	Ressort	Resorte	Mola	1
14	981/99822	Vibrator Cable	Câble de vibreur	Cable del vibrador	Cabo Vibratória	1
15	981/99819	Bolt	Boulon	Tuerca	Perno	2
16	8/8008	Nut	Ecrou	Tuerca	Porca	5
17	8/6007	Nut	Ecrou	Tuerca	Porca	1
18	981/99920	Buffer	Butoir	Parachoques	Amortecedor	1
19	74/0026	Knob	Poignée	Pomo	Botão	1
20	981/99965	Plate	Plaque	Placa	Placa	1
21	981/99966	Spacer	Entretoise	Espaciador	Espaciador	1
22	500/06100	Grease Nipple	Téton de graissage	Conexión para engrase	Bocal de Lubrificación	2
23	7/8037	Screw	Vis	Tornillo	Parafuse	6
24	981/99801	Spacer	Entretoise	Espaciador	Espaciador	4
25	7/8092	Screw	Vis	Tornillo	Parafuse	2
26	7/8016	Screw	Vis	Tornillo	Parafuse	4
27	4/8006	Washer	Rondelle	Arandela	Anilha	4
28 - #	981/99973	Cover	Couvercle	Cubierta	Tampa	1
29 - #	981/99972	Cover	Couvercle	Cubierta	Tampa	1
30	981/99820	Spacer	Entretoise	Espaciador	Espaciador	2
31	981/99824	Bar	Barre	Barra	Barra	1
32	981/99823	Knob	Poignée	Pomo	Botão	1
33	981/99828	Plate	Plaque	Placa	Placa	1
34	8/10002	Nut	Ecrou	Tuerca	Porca	1
35	981/09400	Lever	Levier	Palanca	Alavanca	1
36	3/0039	Pin	Goupille	Pasador	Pino	1
37	4/8004	Washer	Rondelle	Arandela	Anilha	1

- To see the colour options for this part, please see the '# ' area of the 'Spare Parts Information' section of the Operators Manual.

- To see the colour options for this part, please see the '## ' area of the 'Spare Parts Information' section of the Operators Manual.

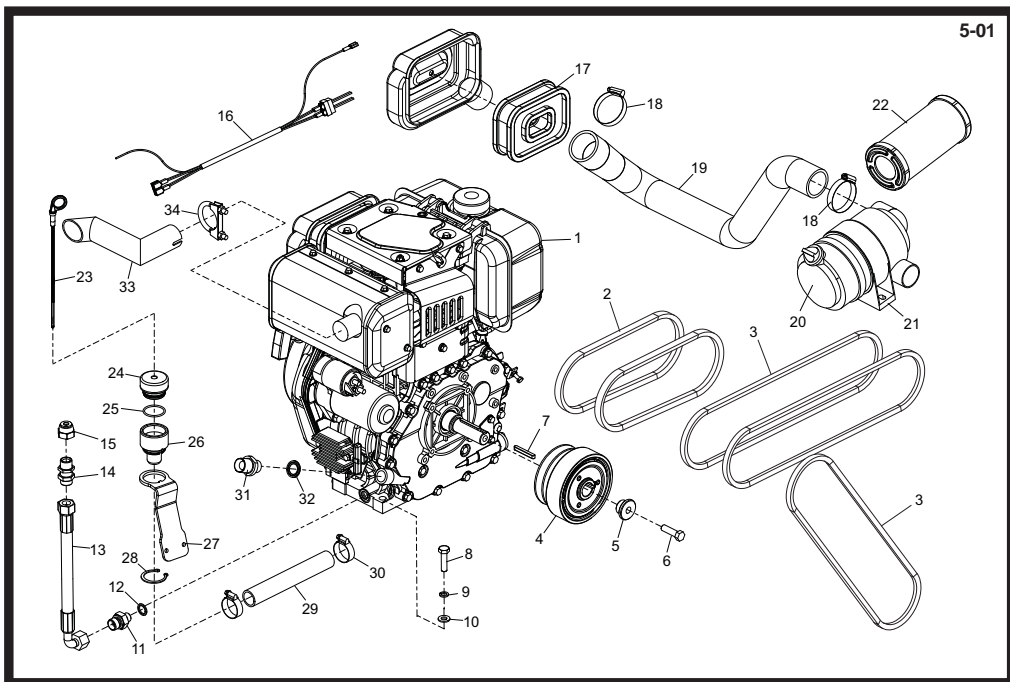


Drum Assembly

1	2/0061	Spring	Ressort	Resorte	Mola	1
2	7/6008	Screw	Vis	Tornillo	Parafuso	M6 x 8 1
3	919/99843_1	Boss	Bossage	Resalte	Cubo	1
4	919/99843_2	Bar	Barre	Resalte	Barra	1
5	74/0001	Knob	Poignée	Pomo	Botão	1
6	981/00301	Support	Support	Soporte	Suporte	1
7	3/9012	Circlip	Circlip	Resorte circular	Grampo circular	→ I00980 1
8	53/0085	Bearing	Roulement	Cojinete	Rolamanto	→ I00980 1
8	53/0094	Bearing	Roulement	Cojinete	Rolamanto	→ I00981 1
9	981/00100	Drum	Tambour	Tamburo	Tambor	1
10	4/3902	Washer	Rondelle	Arandela	Anilha	M3 1
11	981/99997	Hub	Moyeu	Cubo Reductor	Cubo da Roda	1
12	4/1204	Washer	Rondelle	Arandela	Anilha	M12 4
13	981/07400	Wheel Motor Bolt Kit	Kit de boulon de moteur roue	Kit Perno motor de la rueda	Kit de parafuso motor de roda	→ I00439 4
14	981/07400	Wheel Motor Bolt Kit	Kit de boulon de moteur roue	Kit Perno motor de la rueda	Kit de parafuso motor de roda	→ I00439 4
15	981/07800	Kit	Kit	Kit	Kit	→ I00439 1
15	981/00105	Support	Support	Soporte	Suporte	→ I00439 1
16	53/0084	Bearing	Roulement	Cojinete	Rolamanto	→ I00440 2
17	3/9030	Circlip	Circlip	Resorte circular	Grampo circular	Ø80 1
18	6/1148	Hydraulic Motor	Moteur Hydraulique	Motor hidráulico	Motor hidráulico	1
19	981/00501	Support	Support	Soporte	Suporte	1
20	21/0351	Key	Clavette	Chaveta	Chave	1
21	8/20004	Nut	Ecrou	Tuerca	Porca	1
22	981/07400	Kit	Kit	Kit	Kit	→ I00439 1
22	7/12042	Screw	Vis	Tornillo	Parafuso	→ I00440 8
23	981/07400	Kit	Kit	Kit	Kit	→ I00439 1
23	4/1218	Washer	Rondelle	Arandela	Anilha	→ I00440 8
24	981/99806	Shim	Cale	Cuña	Calço	A/R 1
25	9/12042	Screw	Vis	Tornillo	Parafuso	→ I00440 4
26	4/1218	Washer	Rondelle	Arandela	Anilha	→ I00440 4
27	8/12013	Nut	Ecrou	Tuerca	Porca	→ I00440 4
28	7/10025	Screw	Vis	Tornillo	Parafuso	M10 x 12 1
29	981-99800	Brake Disc	Disque de frein	Disco del freno	Disco de travão	→ I01117 1
30	7/12013	Screw	Vis	Tornillo	Parafuso	→ I01117 (M12 x 35) 3
31	4/1202	Washer	Rondelle	Arandela	Anilha	→ I01117 (M12) 3
32	981/09100	Drum Kit	Kit tambour de frein	Kit de tambor de freno	Kit de Tambor de freio	1

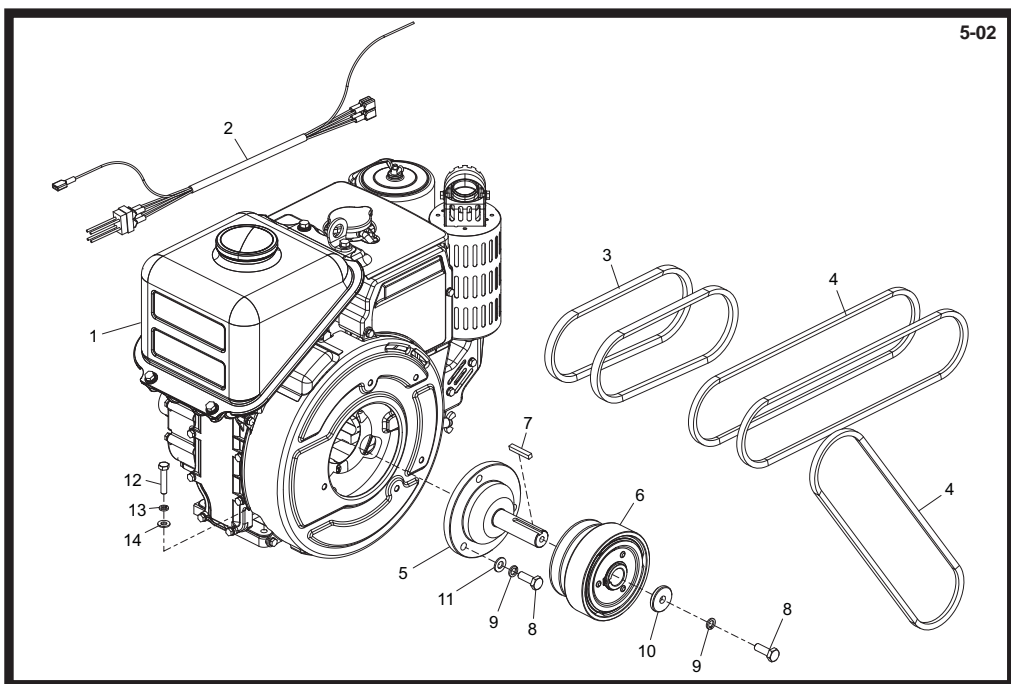
Not Shown

-	5/0088	Seal Kit	Jeu étanchéité	Juego retenes	Conjunto de Vedação	1
		Hydraulic Motor	Moteur Hydraulique	Motor hidráulico	Motor hidráulico	1



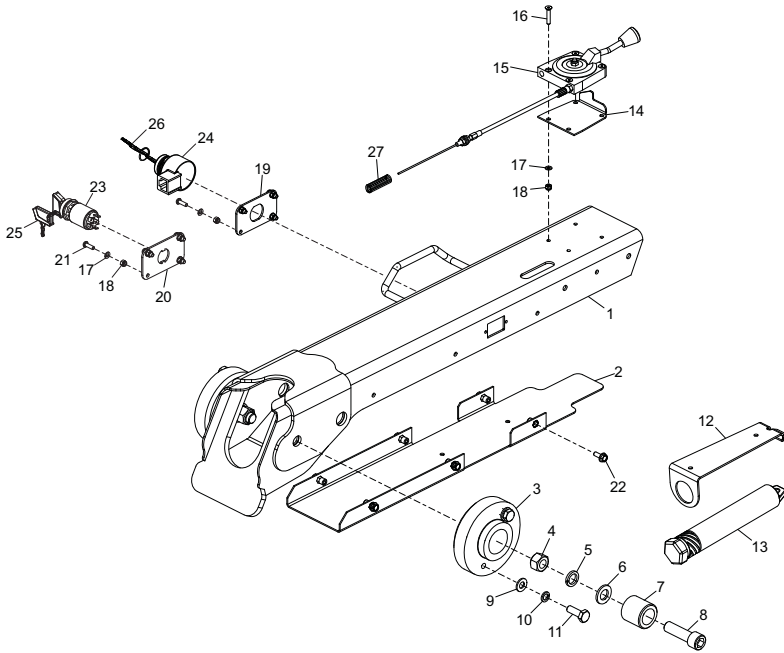
Yanmar L100N Engine Assembly

1	20/0111	Engine	Moteur	Motor	Motor	Yanmar L100N	1
2	21/0281	Belt	Courroie	Correa	Cinta		2
3	21/0111	Belt	Courroie	Correa	Cinta		3
4	21/0341	Clutch	Embrayage	Embrague	Embraiagem		1
5	981/99946	Spacer	Entretoise	Espaciador	Espaçador		1
6	7/10057	Screw	Vis	Tornillo	Parafuse		1
7	21/0377	Key	Clavette	Chaveta	Chave		1
8	9/10030	Bolt	Boulon	Perno	Perno		4
9	4/1003	Washer	Rondelle	Arandela	Anilha	M10	4
10	4/1005	Washer	Rondelle	Arandela	Anilha	M10	4
11	6/0243	Adaptor	Adaptateur	Adaptador	Adaptador		1
12	5/0038	Seal	Joint d'étanchéité	Obturador	Vedação		1
13	32/0142	Hose	Tuyau	Manguera	Tubagem		1
14	6/2023	Adaptor	Adaptateur	Adaptador	Adaptador		1
15	6/2024	Cap	Capuchon	Casquete	Tampa		1
16	71/0271	Harness	Faisceau	Arnés	Cablagem		1
17	21/0349	Filter	Filtre	Filtro	Filtrante		1
18	3/7043	Clip	Collier	Presilla	Grampo		2
19	21/0369	Pipe	Tubo	Zuigtao	Zuiger		1
20	21/0053	Air Filter	Filtre à air	Filtro de aire	Filtro de Ar		1
21	21/0052	Bracket	Patte de montage	Escudra	Suporte		1
22	21/0391	Filter Element	Élément Filtre	Elemento Filtro	Elemento Filtrante		1
23	21/0405	Dipstick	Jauge	Varilla para medición del nivel del aceite	Vareta de Medição de Nivel		1
24	21/0408	Boss	Bossage	Resalte	Cubo		1
25	5/0012	Seal	Joint d'étanchéité	Obturador	Vedação	1 1/4"	1
26	21/0407	Boss	Bossage	Resalte	Cubo		1
27	981/99902	Support	Support	Soporte	Supporte		1
28	3/9032	Circlip	Circlip	Resorte circular	Grampo circular		1
29	34/0049	Hose	Tuyau	Manguera	Tubagem		1
30	3/7062	Clip	Collier	Presilla	Grampo		2
31	21/0406	Adaptor	Adaptateur	Adaptador	Adaptador		1
32	5/0094	Seal	Joint d'étanchéité	Obturador	Vedação		1
33	23/00604	Exhaust	Echappement	Escape	Escape		1
34	23/00603	Clamp	Bride	Mordaza	Grampo		1



Kubota EA330 Engine Assembly

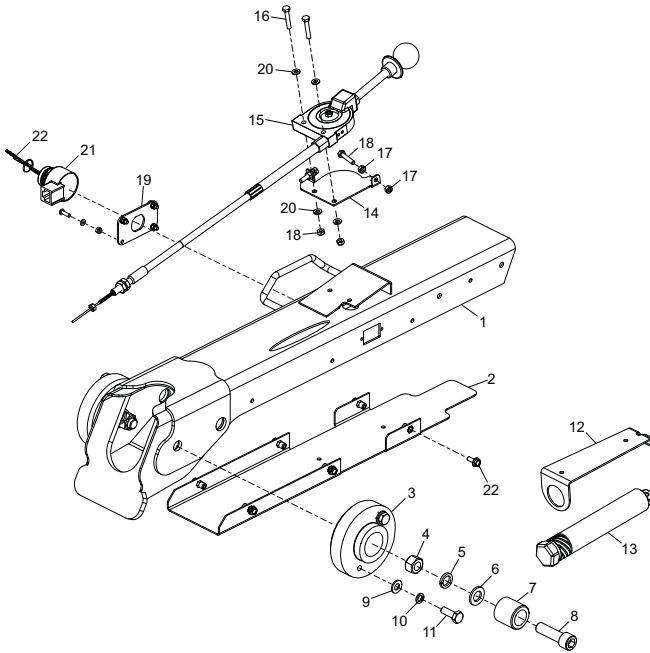
1	20/0120	Engine	Moteur	Motor	Motor	Kubota EA330	1
2	71/0275	Harness	Faisceau	Arnés	Cablagem		1
3	21/0378	Belt	Courroie	Correa	Cinta		2
4	21/0111	Belt	Courroie	Correa	Cinta		3
5	981/99933	Spacer	Entretoise	Espaciador	Espaçador		1
6	21/0341	Clutch	Embrayage	Embrague	Embraiagem		1
7	21/0372	Key	Clavette	Chaveta	Chave		1
8	7/10010	Screw	Vis	Tornillo	Parafuse		4
9	4/1003	Washer	Rondelle	Arandela	Anilha	M10	4
10	981/99988	Washer	Rondelle	Arandela	Anilha		1
11	4/1005	Washer	Rondelle	Arandela	Anilha	M10	3
12	9/8019	Bolt	Boulon	Perno	Perno		4
13	4/8003	Washer	Rondelle	Arandela	Anilha	M8	4
14	4/8006	Washer	Rondelle	Arandela	Anilha	M8	4



Handle Assembly

1 - ##	981/06500	Handle	Guidon	Manillar	Punho	→ I01181	1
1 - ##	981/09300	Handle	Guidon	Manillar	Punho	→ 01182	1
2 - ##	981/08500	Plate	Plaque	Placa	Placa	→ I01181	1
2 - ##	981/99826	Plate	Plaque	Placa	Placa	→ 01182	1
3	161/99543	Bearing	Roulement	Cojinete	Rolamento		2
4	8/16005	Nut	Ecrou	Tuerca	Porca		2
5	05.1.009	Washer	Rondelle	Arandela	Anilha	M16	2
6	4/1601	Washer	Rondelle	Arandela	Anilha	M16	2
7	161/99544	Boss	Bossage	Resalte	Cubo		2
8	7/16010	Screw	Vis	Tornillo	Parafuse		2
9	4/1005	Washer	Rondelle	Arandela	Anilha	M10	4
10	4/1003	Washer	Rondelle	Arandela	Anilha	M10	4
11	9/10001	Bolt	Boulon	Perno	Perno		4
12	73/0051	Bracket	Patte de montage	Escuadra	Suporte		1
13	72/0033	Document Tube	Tube de document	Tubo documento	Tubo de Documento		1
14	981/99968	Plate	Plaque	Placa	Placa	Yanmar	1
14	981/99994	Plate	Plaque	Placa	Placa	Kubota	1
15	981/99916	Throttle Lever	Manette d'accélérateur	Palanca de aceleración	Alavanca do estrangulado		1
16	7/5170	Screw	Vis	Tornillo	Parafuse		4
17	4/5002	Washer	Rondelle	Arandela	Anilha		8
18	8/5003	Nut	Ecrou	Tuerca	Porca		8
19	981/99990	Plate	Plaque	Placa	Placa		1
20	981/99991	Plate	Plaque	Placa	Placa		1
21	7/5171	Screw	Vis	Tornillo	Parafuse		4
22	7/6034	Screw	Vis	Tornillo	Parafuse		6
23	70/0184	Ignition & Key	Ignition & Clavette	Ignición & Chaveta	Ignição & Chave	Yanmar	1
24	70/0273	Ignition & Key	Ignition & Clavette	Ignición & Chaveta	Ignição & Chave	Kubota	1
25	70/0185	Key	Clavette	Chaveta	Chave	Yanmar	1
26	919/99808	Key	Clavette	Chaveta	Chave	Kubota	1
27	2/0081	Spring	Ressort	Resorte	Mola	Kubota	1

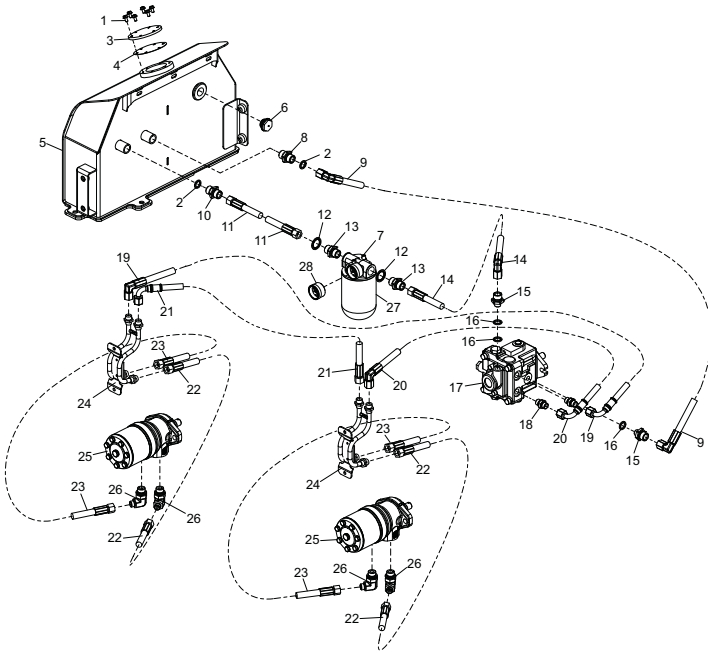
- To see the colour options for this part, please see the '# ' area of the 'Spare Parts Information' section of the Operators Manual.
 ## - To see the colour options for this part, please see the '## ' area of the 'Spare Parts Information' section of the Operators Manual.



Handle Assembly, EPA - North America

1 - ##	981/07100.....	Handle	Guidon	Manillar	Punho.....	1
2 - ##	981/99992.....	Plate.....	Plaque	Placa	Placa	1
3	161/99543.....	Bearing	Roulement	Cojinete	Rolamanto	2
4	8/16005.....	Nut	Ecrou	Tuerca	Porca	2
5	05.1.009.....	Washer	Rondelle	Arandela	Anilha	M16.....2
6	4/1601.....	Washer	Rondelle	Arandela	Anilha	M16.....2
7	161/99544.....	Boss	Bossage	Resalte	Cubo	2
8	7/16010.....	Screw	Vis	Tomillo	Parafuse	2
9	4/1005.....	Washer	Rondelle	Arandela	Anilha	M10.....4
10	4/1003.....	Washer	Rondelle	Arandela	Anilha	M10.....4
11	9/10001.....	Bolt.....	Boulon	Perno	Perno	4
12	73/0051.....	Bracket	Patte de montage	Escuadra	Suporte	1
13	72/0033.....	Document Tube	Tube de document	Tubo documento	Tubo de Documento	1
14	981/99808.....	Plate	Plaque	Placa	Placa	1
15	21/0376.....	Throttle Lever.....	Manette d'accélérateur.....	Palanca de aceleración.....	Alavanca do estrangulado.....	1
16	9/6003.....	Screw	Vis	Tomillo	Parafuse	M6 x.....2
17	8/6001.....	Nut	Ecrou	Tuerca	Porca	M6.....4
18	7/6039.....	Screw	Vis	Tomillo	Parafuse	M6 x.....2
19	981/99990.....	Plate	Plaque	Placa	Placa	1
20	4/6001.....	Washer	Rondelle	Arandela	Anilha	M6.....4
21	70/0273.....	Ignition & Key.....	Ignition & Clavette	Ignição & Chaveta.....	Ignição & Chave	1
22	919/99808.....	Key.....	Clavette	Chaveta	Chave	1

- To see the colour options for this part, please see the '# ' area of the 'Spare Parts Information' section of the Operators Manual.
 ## - To see the colour options for this part, please see the '## ' area of the 'Spare Parts Information' section of the Operators Manual.

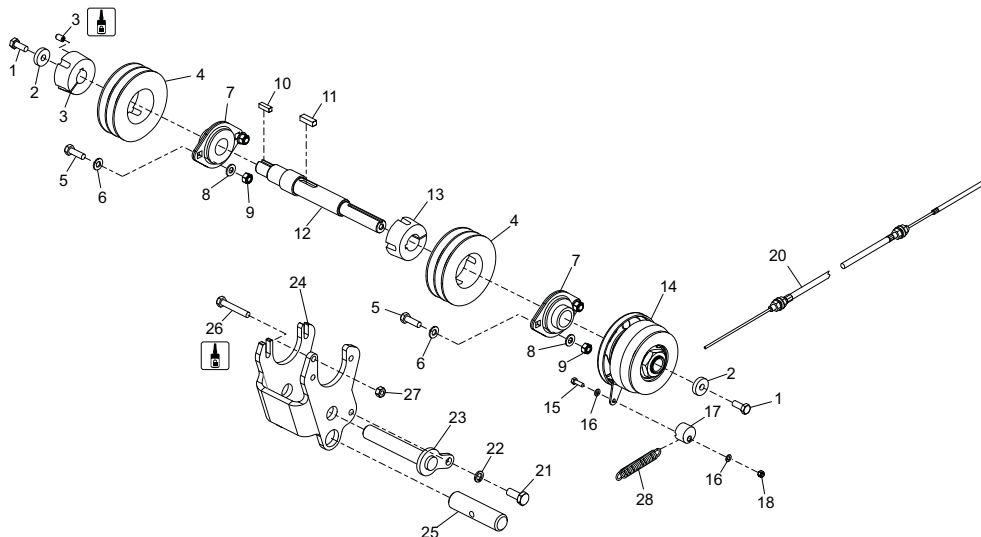


Hydraulic Assembly

1	7/6032	Screw	Vis	Tornillo	Parafuse	M6 x 12	6
2	5/0091	Seal	Joint d'étanchéité	Obturator	Vedação		2
3	981/01908	Cap	Capuchon	Casquete	Tampa		1
4	981/01914	Gasket	Joint	Junta	Gaxeta		1
5 - #	981/06300	Hydraulic Oil Tank	Réservoir d'huile hydraulique	Depos. de aceite hidraulico	Tanque de óleo Hidráulico		1
6	40/00005	Gauge	Jauge	Calibrar	Ajuizar		1
7	6/5020	Filter	Filtre	Filtro	Filtrante		1
8	6/0252	Adaptor	Adaptateur	Adaptador	Adaptador		2
9	32/0136	Hose	Tuyau	Manguera	Tubagem		1
10	6/0244	Adaptor	Adaptateur	Adaptador	Adaptador		4
11	32/0137	Hose	Tuyau	Manguera	Tubagem		1
12	5/0086	Seal	Joint d'étanchéité	Obturator	Vedação		2
13	6/0254	Adaptor	Adaptateur	Adaptador	Adaptador		2
14	32/0138	Hose	Tuyau	Manguera	Tubagem		1
15	6/0253	Adaptor	Adaptateur	Adaptador	Adaptador		1
16	5/0007	Seal	Joint d'étanchéité	Obturator	Vedação		2
17	6/1147	Adaptor	Adaptateur	Adaptador	Adaptador		1
18	6/0242	Adaptor	Adaptateur	Adaptador	Adaptador		2
19	31/0137	Hose	Tuyau	Manguera	Tubagem		1
20	31/0140	Hose	Tuyau	Manguera	Tubagem		1
21	31/0141	Hose	Tuyau	Manguera	Tubagem		1
22	31/0143	Hose	Tuyau	Manguera	Tubagem		2
23	31/0143	Hose	Tuyau	Manguera	Tubagem		2
24	981/06400	Pipe	Tubo	Pistão	Zuigo		2
25	6/1148	Hydraulic Motor	Moteur Hydraulique	Motor hidráulico	Motor hidráulico		2
26	6/0258	Adaptor	Adaptateur	Adaptador	Adaptador		4
27	6/5021	Filter Element	Élément Filtre	Elemento Filtro	Elemento Filtrante		1
28	6/5022	Gauge	Jauge	Calibrar	Ajuizar		1

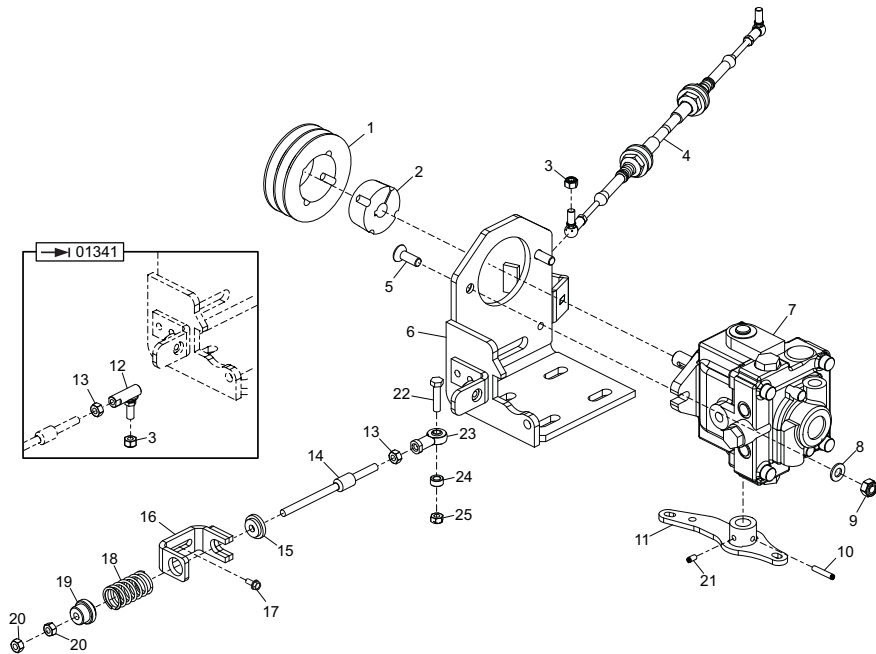
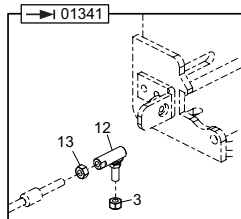
- To see the colour options for this part, please see the '# ' area of the 'Spare Parts Information' section of the Operators Manual.

- To see the colour options for this part, please see the '## ' area of the 'Spare Parts Information' section of the Operators Manual.



Layshaft Assembly

1	9/8012	Bolt	Boulon	Perno	Perno	M8 x 20	1
2	4/1015	Spacer	Entretoise	Espaciador	Espaçador		1
3	21/0343	Bush	Douille	Buje	Bucha		1
4	981/02404	Pulley	Poulie	Polia	Polia		2
5	7/8012	Screw	Vis	Tomillo	Parafuse	M8 x 25	4
6	4/8006	Washer	Rondelle	Arandela	Anilha	M8	4
7	53/0087	Bearing	Roulement	Cojinete	Rolamanto		2
8	4/8006	Washer	Rondelle	Arandela	Anilha	M8	4
9	8/8008	Nut	Ecrou	Tuerca	Porca	M8	4
10	21/0346	Key	Clavette	Chaveta	Chave		1
11	21/0347	Key	Clavette	Chaveta	Chave		1
12	981/02401	Shaft	Axe	Eje	Veio		1
13	21/0345	Bush	Douille	Buje	Bucha		1
14	21/0342	Clutch	Embrayage	Embrague	Embraiagem		1
15	7/5021	Screw	Vis	Tomillo	Parafuse	M5 x 25	1
16	4/5002	Washer	Rondelle	Arandela	Anilha	M5	2
17	981/99825	Boss	Bossage	Resalte	Cubo		1
18	8/5003	Nut	Ecrou	Tuerca	Porca	M5	1
20	981/99915	Vibrator Cable	Câble de vibreur	Cable del vibrador	Cabo Vibratória		1
21	7/10005	Screw	Vis	Tomillo	Parafuse	M10 x	1
22	4/1003	Washer	Rondelle	Arandela	Anilha	M10 x	1
23	981/04500	Pin	Goupille	Pasador	Pino		1
24	981/02300	Bracket	Patte de montage	Escuadra	Suporte		1
25	981/02402	Pin	Goupille	Pasador	Pino		1
26	7/8026	Screw	Vis	Tomillo	Parafuse	M8 x 50	1
27	8/8001	Nut	Ecrou	Tuerca	Porca	M8	1
28	961/99925	Spring	Ressort	Resorte	Mola		1

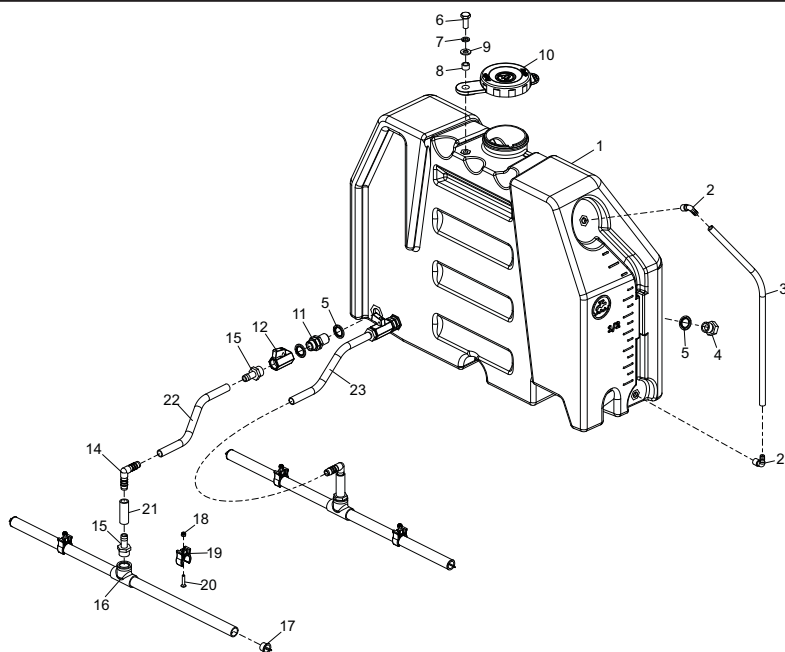


Pump Assembly

1	981/02404.....	Pulley.....	Poulie.....	Polia.....	Polia.....	1
2	21/0345.....	Bush.....	Douille.....	Buje.....	Bucha.....	1
3	8/8008.....	Nut.....	Ecrou.....	Tuerca.....	Porca.....	M8 3
4	981/99917.....	Control Cable.....	Câble de commande.....	Cable de control.....	Cabo de Control.....	1
5	7/10014.....	Screw.....	Vis.....	Tornillo.....	Parafuse.....	M10 x 30 2
6	981/03000.....	Support.....	Support.....	Soporte.....	Suporte.....	1
7	6/1147.....	Hydraulic Pump.....	Pompe hydraul.....	Bomba hidráulica.....	Bomba hidráulica.....	1
8	4/1005.....	Washer.....	Rondelle.....	Arandela.....	Anilha.....	M10 x 30 2
9	8/10006.....	Nut.....	Ecrou.....	Tuerca.....	Porca.....	M10 x 30 2
10	3/0083.....	Spirol Pin.....	Goupille Spirol.....	Pasador Spirol.....	Pino em Espiral.....	1
11	981/03500.....	Lever.....	Lever.....	Palanca.....	Alavanca.....	1
12	3/5046.....	Joint.....	Joint.....	Junta.....	Junta.....	1
13	8/8001.....	Nut.....	Ecrou.....	Tuerca.....	Porca.....	M8 1
14	919/01000.....	Shaft.....	Axe.....	Eje.....	Veio.....	1
15	919/99819.....	Boss.....	Bossage.....	Resalte.....	Cubo.....	1
16	919/01100.....	Bracket.....	Patte de montage.....	Escuadra.....	Suporte.....	1
17	7/8037.....	Screw.....	Vis.....	Tornillo.....	Parafuse.....	1
18	2/0061.....	Spring.....	Ressort.....	Resorte.....	Mola.....	1
19	919/99821.....	Boss.....	Bossage.....	Resalte.....	Cubo.....	1
20	8/8001.....	Nut.....	Ecrou.....	Tuerca.....	Porca.....	M8 2
21	7/8006.....	Screw.....	Vis.....	Tornillo.....	Parafuse.....	M8 x 16 1
22	7/8007.....	Screw.....	Vis.....	Tornillo.....	Parafuse.....	M8 x 1 1
23	3/5038.....	Rod End.....	Tête de bielle.....	Cabeza de biela.....	Extremidade da haste.....	1
24	981/99827.....	Boss.....	Bossage.....	Resalte.....	Cubo.....	1
25	8/8002.....	Nut.....	Ecrou.....	Tuerca.....	Porca.....	M8 1

Not Shown

-	5/0087.....	Seal Kit.....	Jeu étanchéité.....	Juego retenes.....	Conjunto de Vedação.....	1
-		Hydraulic Pump.....	Pompe hydraul.....	Bomba hidráulica.....	Bomba hidráulica.....	1

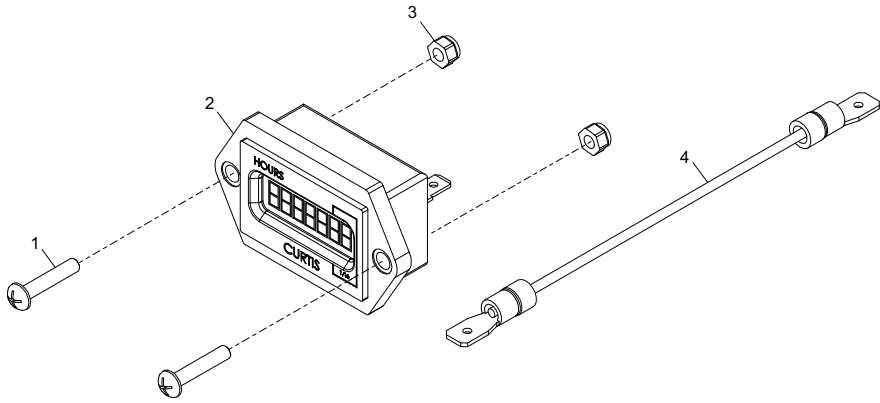


Water Tank Assembly

1	981/02501.....	Water Tank	Réservoir d'eau	Depos. de agua	Tanque de água	1
2	6/0233.....	Adaptor	Adaptateur	Adaptador	Adaptador	2
3	981/02502.....	Hose	Tuyau	Manguera	Tubagem	1
4	10-601-0800....	Bung	Obturateur	Tapón	Tampão	1
5	5/0085.....	Seal	Joint d'étanchéité	Obturator	Vedação	5
6	7/10005.....	Screw	Vis	Tornillo	Parafuse	M10 x 25.....1
7	4/1003.....	Washer	Rondelle	Arandela	Anilha	M10.....1
8	50/000071.....	Spacer	Entretoise	Espaciador	Espaçador	1
9	4/1005.....	Washer	Rondelle	Arandela	Anilha	M10.....1
10	151/99963.....	Cap	Capuchon	Casquete	Tampa	1
11	6/0237.....	Adaptor	Adaptateur	Adaptador	Adaptador	2
12	6/0238.....	Adaptor	Adaptateur	Adaptador	Adaptador	2
14	6/0236.....	Adaptor	Adaptateur	Adaptador	Adaptador	2
15	6/0235.....	Adaptor	Adaptateur	Adaptador	Adaptador	2
16	981/04700.....	Pipe	Tubo	Pistão	Zuiger	2
17	6/2022.....	Adaptor	Adaptateur	Adaptador	Adaptador	4
18	8/5003.....	Nut	Ecrou	Tuerca	Porca	M5.....4
19	3/7059.....	Clamp	Bride	Mordaza	Grampo	4
20	7/5023.....	Screw	Vis	Tornillo	Parafuse	M5 x 15.....4
21	32/0141.....	Hose	Tuyau	Manguera	Tubagem	2
22	32/0140.....	Hose	Tuyau	Manguera	Tubagem	1
23	32/0139.....	Hose	Tuyau	Manguera	Tubagem	1

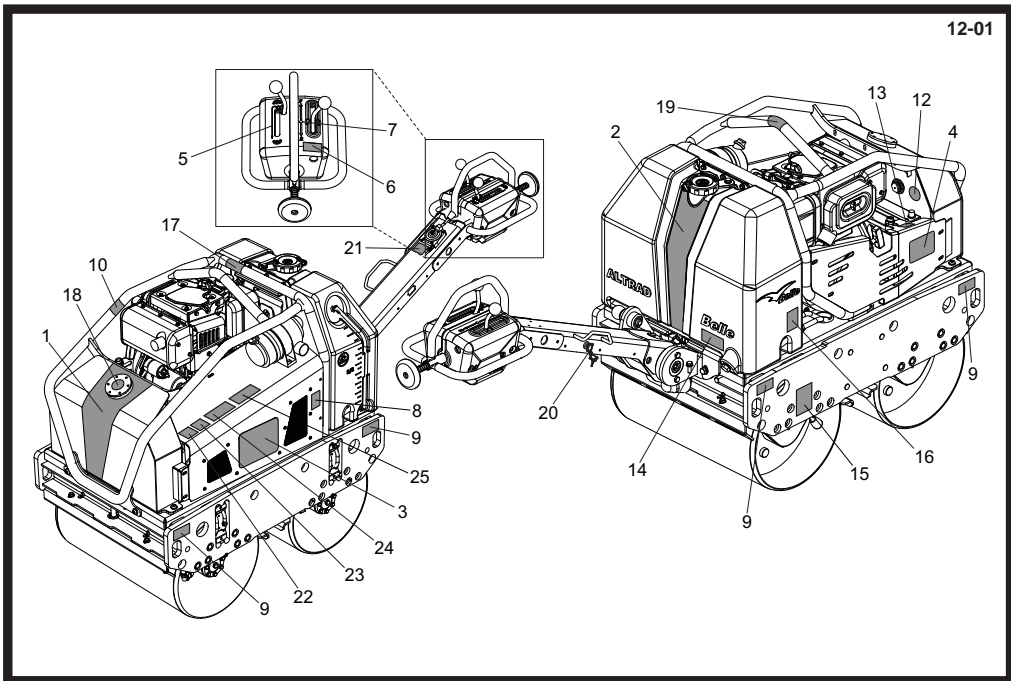
- To see the colour options for this part, please see the '# ' area of the 'Spare Parts Information' section of the Operators Manual.

- To see the colour options for this part, please see the '## ' area of the 'Spare Parts Information' section of the Operators Manual.



Hourmeter

1	7/3010	Screw	Vis	Tornillo	Parafuse	M3 x 20	2
2	100/02400	Hourmeter	Compteur horaire	Cuenta horas	Horímetro		1
3	8/3002	Nut	Ecrou	Tuerca	Porca	M3	2
4	71/0274	Harness	Faisceau	Arnés	Arnés		1



Decals

1	800/99517	Decal	Autocollant	Rótulo	Decalque	TDX 650A	1
2	800/99526	Decal	Autocollant	Rótulo	Decalque	TDX 650A	1
3	800/99514	Decal	Autocollant	Rótulo	Decalque	TDX 650A	1
4	800/99515	Decal	Autocollant	Rótulo	Decalque	TDX 650A	1
5	800/99682	Decal	Autocollant	Rótulo	Decalque	Vibration Lever	1
6	800/99990	Decal	Autocollant	Rótulo	Decalque	Read Manual	1
7	800/99681	Decal	Autocollant	Rótulo	Decalque	Forward / Reverse	1
8	800/99676	Decal	Autocollant	Rótulo	Decalque	Service Canopy	1
9	800/99686	Decal	Autocollant	Rótulo	Decalque	Strapping Points	4
10	800/99801	Decal	Autocollant	Rótulo	Decalque	Hot Parts	1
11	800/99685	Decal	Autocollant	Rótulo	Decalque	Yanmar Engine Oil Fill	1
11	800/99553	Decal	Autocollant	Rótulo	Decalque	Kubota Engine Oil Fill	1
12	800/99675	Decal	Autocollant	Rótulo	Decalque	Hydraulic Oil Level	1
13	800/99684	Decal	Autocollant	Rótulo	Decalque	Engine Oil Type	1
14	800/99687	Decal	Autocollant	Rótulo	Decalque	Water Tank Drain	1
15	800/99680	Decal	Autocollant	Rótulo	Decalque	Park Brake	1
16	800/99679	Decal	Autocollant	Rótulo	Decalque	Spraybar Tap	1
17	800/99673	Decal	Autocollant	Rótulo	Decalque	Diesel Only	1
18	800/99674	Decal	Autocollant	Rótulo	Decalque	Hydraulic Oil Fill	1
19	800/99986	Decal	Autocollant	Rótulo	Decalque	Lifting Point	1
20	800/99678	Decal	Autocollant	Rótulo	Decalque	Ignition Key (Yanmar)	1
20	800/99516	Decal	Autocollant	Rótulo	Decalque	Ignition Key (Kubota)	1
21	800/99677	Decal	Autocollant	Rótulo	Decalque	Throttle Lever	1
22	19.0.373	Decal	Autocollant	Rótulo	Decalque	Caution - Safety	1
23	800/99942	Decal	Autocollant	Rótulo	Decalque	107 dB(A)	1
24	800/99521	Decal	Autocollant	Rótulo	Decalque	Exhaust Fumes	1
25	800/99802	Decal	Autocollant	Rótulo	Decalque	Caution - Crushing	1



BELLE
LIGHT
CONSTRUCTION
EQUIPMENT

ALTRAD BELLE
Sheen, Nr. Buxton, Derbyshire, SK17 0EU, GB
Tel. +44 (0)1298 84606 - Fax +44 (0)1298 84722 - Email: sales@altrad-belle.com
www.Altrad-Belle.com